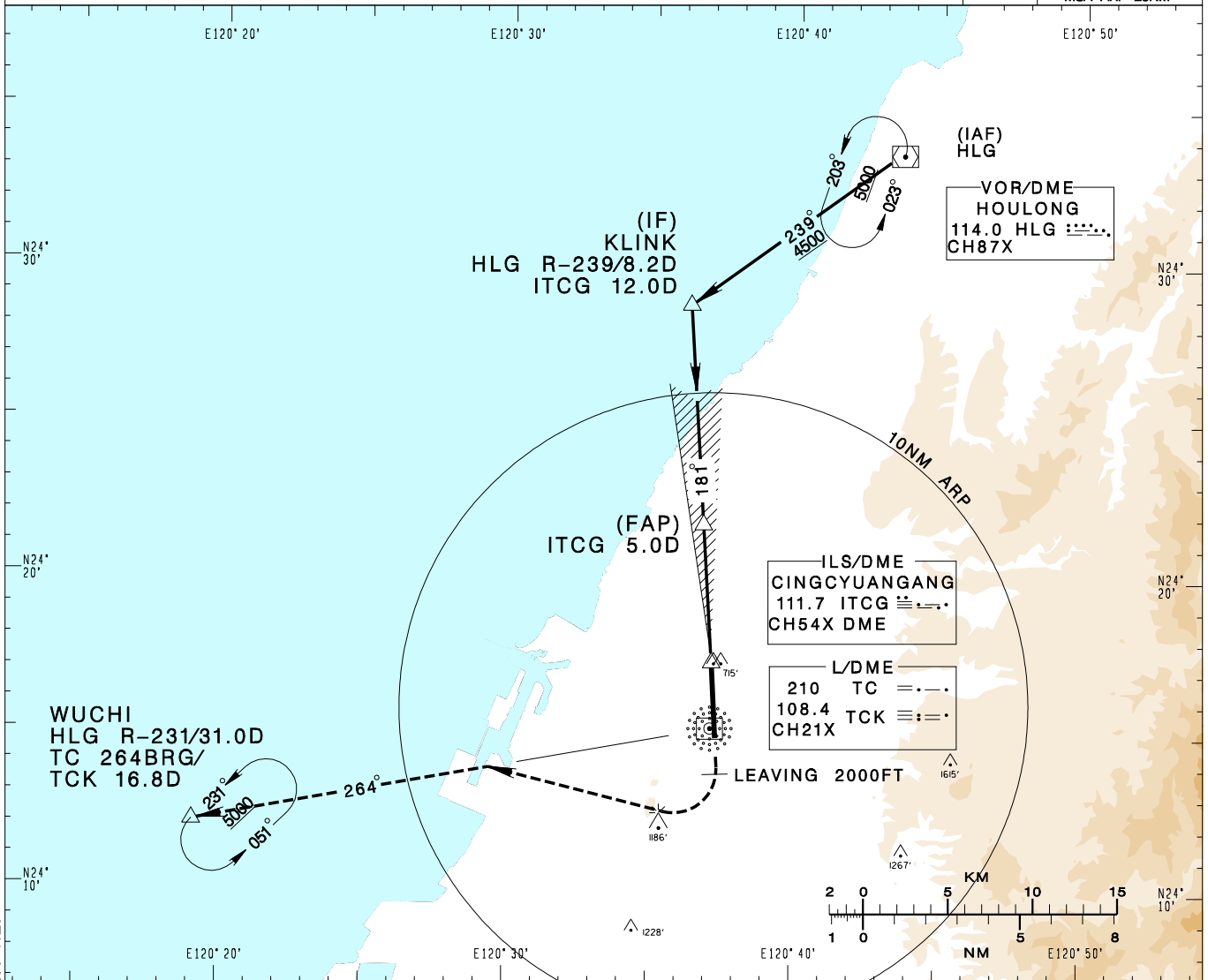


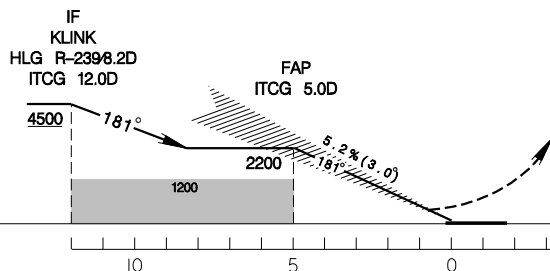
臺中/清泉崗機場
TAICHUNG/CINGCYUANGANG AD

RCMQ
ILS RWY18

TAIPEI APP 130.1 129.6	TAICHUNG TWR 118.75 120.25	ATIS 127.75			
Apt Elev: 665'		Rwy18 THR Elev: 653'		Trans Level: FL130	Trans Alt: 11,000'
BEARINGS ARE MAGNETIC; DISTANCES ARE NAUTICAL MILES; ELEVATIONS, HEIGHTS IN FEET					



CHANGES: UPDATE LEG CRS AND MAG VAR; CHG MSA REF



MISSED APCH:
CLIMB RWY HDG TO 2000FT,
TURN RIGHT TO TRACK TC 264BRG TO WUCHI;
CLIMB TO 5000FT AND HOLD.

MINIMA (OCA IN FT, VIS IN M, OCH IN FT)

CATEGORY	A	B	C	D
STRAIGHT IN	853/1200 200	853/1200 200	863/1200 210	873/1200 220
CIRCLING	1360/1900 695	1360/2800 695	1600/4400 935	1600/4800 935

NOTE
1. CIRCLING NOT AUTHORIZED EAST OF RWY.
2. TRAFFIC FROM WUCHI JOIN HLG HOLDING PATTERN FOR COURSE REVERSAL.

*DME REQUIRED.